



Wheat Septoria Leaf & Glume Blotch

Symptoms:

- Primarily on leaves & glumes/grain tissue

Initial symptoms, etc.:

- Water soaked lesions that yellow then become tan to light brown and oval-shaped
- Honey brown fruiting structures (pycnidia) visible in lesions when held up to sunlight. May ooze spores during wet conditions (upper right picture)
- Yellowing around mature lesions

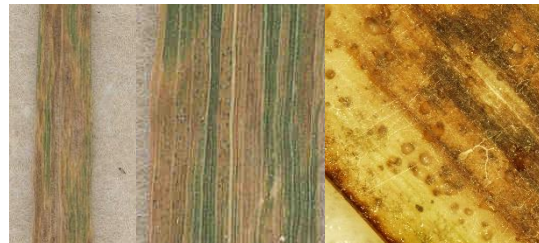
Glume blotch phase:

- Purplish brown starting at the tip and may cover complete area of glumes
- Seed infections can be confused with fusarium damaged kernels during grading

Occurrence:

- Across the Prairies
- Extended exposure to rainfall favours this disease

Symptoms



Courtesy of J. Gilbert, AAFC Winnipeg

Glume blotch infected wheat kernels (L) and fusarium damaged kernels (R)



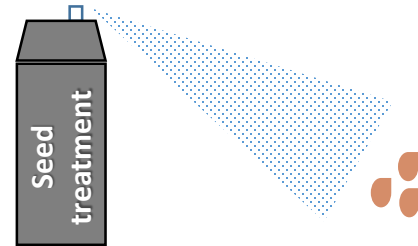
Courtesy of Randy Clear, Can. Grain Comm.





Key Wheat Septoria Leaf & Glume Blotch Management Strategies

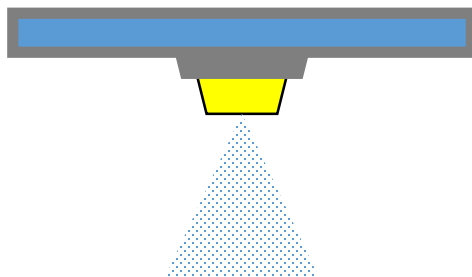
● Rotation to non-host for => 2 years ➔



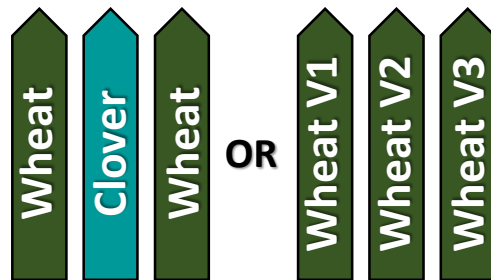
Volunteer control



Foliar fungicide



Upper canopy



Intercropping or wheat variety mixtures

